

Artikel von A-Z



Inhaltsverzeichnis


1	V5	1
2	V7	2
3	V15	2
4	V21	2
5	Software	2
5.1	ETISS	2
5.2	ETISS NG	3
5.3	ETISS ERP	3
5.4	ETOSS	3
5.5	Einrichtungsassistent	3
6	Gate	3
6.1	Galaxy-Gate	4
7	Akku	4
7.1	Li-ion Battery	4
8	KT-Drive	4
8.1	KT Drive	4
9	POS	4
9.1	POS	5
10	Kamberi Group	5
10.1	Kamberi Group	5

Vending Unit







V5

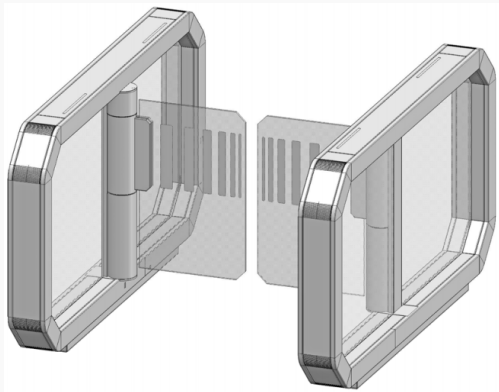
- [VendingUnit ~ V5 ~ Benutzerhandbuch](#)

	<p>V7</p>
	<ul style="list-style-type: none"> ■ VendingUnit ~ V7 ~ EasyGO ~ user manual ■ VendingUnit ~ V7 ~ VU trolley ~ user manual ■ VendingUnit ~ V7 ~ Bedienvideos ■ VendingUnit ~ V7 ~ Softwareanleitung ■ VendingUnit ~ V7 ~ Troubleshooting ~ Störung: Automat ist außer Betrieb
	<p>V15</p> <ul style="list-style-type: none"> ■ VendingUnit ~ V15 ~ user manual
	<p>V21</p> <ul style="list-style-type: none"> ■ VendingUnit ~ V21 ~ Prospekte ■ VendingUnit ~ V21 ~ hopper management ■ VendingUnit ~ V21 ~ Hoppermanagement ■ VendingUnit/V21/Bedienvideos

Software

	<p>ETISS</p>
	<ul style="list-style-type: none"> ■ ETISS ~ Informationsbroschüre

	<p>ETISS NG</p> <hr/> <ul style="list-style-type: none"> ETISS NG ~ Client Bedienungsanleitung
	<p>ETISS ERP</p> <hr/> <ul style="list-style-type: none"> Backend Frontend ~ ETISS ERP ~ Elektronischer Pfortner Backend Frontend ~ ETISS ERP ~ Lager Inventur Backend Frontend ~ ETISS ERP ~ Reporting Backend Frontend ~ ETISS ERP ~ Reporting v10 Backend Frontend ~ ETISS ERP ~ Verkauf. Angebot anlegen ETISS ERP ~ Backend Bedienungsanleitung Backend Frontend ~ ETISS ERP ~ Datasheet ETISS ERP ~ POS Bedienungsanleitung
	<p>ETOSS</p> <hr/>
	<p>Einrichtungsassistent</p> <hr/> <ul style="list-style-type: none"> Bedienungsanleitung
<p>Gate</p>	



Galaxy-Gate

- [Gate ~ FMCU Galaxy Gate ~ Prospekte](#)
- [Gate ~ FMCU Galaxy Gate ~ Access Manager](#)
- [Covcheck Applicaton Server](#)
- [Gate ~ FMCU Galaxy Gate ~ Benutzerhandbuch](#)
- [Gate ~ FMCU Galaxy Gate ~ Bedienungsanleitung](#)
- [Wanzl Zutrittsmanager ~ Verwaltungs-Dashboard](#)
- [Gate ~ Inbetriebnahme](#)
- [Gate ~ FMCU ~ Checkliste](#)

Akku



Li-ion Battery

- [Li-ion battery ~ batterypack ~ user manual](#)
- [Li-ion battery ~ inverter ~ user manual](#)
- [Li-ion Batterie ~ Wanzl-100l Ladegerät ~ Bedienungsanleitung](#)

KT-Drive




KT Drive

- [KT drive ~ user manual](#)

POS

	POS
---	------------

Kamberi Group	
	Kamberi Group <ul style="list-style-type: none">■ Arbeitsabläufe Videos■ Arbeitsabläufe der Kamberi-Gruppe■ Bedienungsanleitung